



# WMF 1500 S – Your next step!



www.wmf-coffeemachines.com



**Reduced energy consumption**  
With the Eco mode you can reduce the energy consumption of the coffee machine at low utilization.

WMF 1500 S rear view



WMF 1500 S side view



WMF 1500 S Cup&Cool



WMF 1500 S Cup

WMF 1500 S technical data	Basic Milk	Easy Milk
Recommended daily output / max. hourly output*		Up to 180 cups
Power Supply		2,75 – 3,5 kW / 220 – 240 V
Total hot water output/hour		24 litres
Energy loss per day in accordance with DIN 18873-2, Basic Milk / Easy Milk		1,29 / 1,37 kWh
Cold milk drinks		✓
Coffee bean hopper	Right approx. 650 g, centre approx. 550 g	
Chocolate or topping container		1200 g
Outer dimensions (width/height/depth)	325 / 675* mm / 590 mm	
Net weight	Approx. 35 kg	
Continuous sound pressure level (Lpa)**		< 70 db (A)

\* The output depends on the cup size, the quality settings, the dispenser, the equipment and the nominal power rating. The recommended max. daily output is based on the relevant service concept. These average values are for your information only – Let our trained WMF employees put together a coffee machine solution that is designed to meet your needs.  
\*\* Height measured with bean hopper, with lock but without key.  
\*\*\* The A-rated sound pressure level LpA (blow) and LpA (impulse) at the operators' workplace lies below 70 dB (A) in every operating mode.

If the carbonate hardness is 5° dKH or above, a WMF water filter must be used.

Cup&Cool technical data	Technical data Cup
Nominal power rating/main power connection	0,11 – 0,155 kW / 220 – 240 V
Outer dimensions (width/height/depth)	286 / 530 / 566 mm
Net weight	Approx. 31 kg
Removable milk insert capacity	4 litres
Total cup capacity	45 to 186 cups
Heated shelf floors	3, stainless steel
With thermostat	✓
Suitable for self-service	✓
Separate on/off button	✓
Lighting (can be set to different colours)	✓
Milk empty display	✓
Lockable	✓
Removable seal	✓
Sensor for milk temperature	Optional



**Our complete catalogue contains lots of additional information on the following topics**  
· A performance overview showing all coffee machines  
· Made-in-Germany production  
· Milk and steam systems (Basic Milk, Easy Milk, Active Milk, Basic Steam, Easy Steam and Auto Steam)  
· Additional equipment (such as cup racks, coolers, Cup&Cool, vending devices, etc.)  
· Speciality coffees (which specialities can be prepared with which coffee machines)  
You can request the complete catalogue from our customer service centre using the order number 63.8042.0391.

WMF AG Coffee Machines International  
Eberhardstrasse - D-73312 Geislingen/Steige, Germany  
Phone +49 7331-258 482 - Fax +49 7331-258 792  
gastro-export@wmf.de - www.wmf.com

3186 # 63.8371.0391 Printed in Germany 10.13  
All technical changes, typographical mistakes and errors reserved for the entire contents.

## TOP FEATURES



**Slender with dream dimensions**  
The formidable dimensions on the new Top model from WMF are impressive. The same has always been true: The slimmer the better. This is because the less space that is required by a professional coffee machine, the more options you have for setting it up and the more space you have for other appliances. You might even have enough space for a second WMF 1500 S!



**Steam Jet / steam shower**  
Another important factor for the best coffee quality is that the cups need to be at the perfect temperature. Even when filling smaller volumes, as is the case for an espresso, a cold cup can quickly remove all of the heat from the coffee. With the Steam Jet from WMF, each cup is heated to the right temperature in seconds.



**Easy Milk system**  
With the new Easy Milk system, the WMF 1500 S is also opening up the new lucrative market for mixed cold milk drinks. Hot milk, hot milk foam and now also cold milk can be prepared at the touch of a button for individual drinks creations.



**MMI touch display**  
These days, many technical appliances can do more than their owners think they can. Unfortunately, operating these appliances is often so complicated that many options are rarely used or are not used at all. With its revolutionary "Man Machine Interface", the WMF 1500 S guarantees that all functions are simple to understand and use in an instant. This means that no effort is required for you to set the perfect coffee quality or change the lighting, or for your guests to use the machine in self-service mode.

## WMF 1500 S YOUR NEXT STEP

The WMF 1500 S is available with the "Basic Milk" or "Easy Milk" milk systems and the "Basic Steam" steam system.

The information on the milk and steam systems, as well as the drinks that can be prepared with them, can be found in our brochure "WMF Coffee Machines: The Full Range".



<b>03.1900.xxxx</b> Basic Milk, water tank, 2 grinders, Basic Steam, with milk foamer, hot water output, side lighting, Steam Jet, Jet option, 2,75 – 3,5 kW / 220 – 240 V	<b>03.1900.xxxx</b> Basic Milk, water tank, 2 grinders, choc or topping hopper, Basic Steam, with milk foamer, hot water output, side lighting, Steam Jet, Jet option, 2,75 – 3,5 kW / 220 – 240 V	<b>03.1900.xxxx</b> Basic Milk, fixed water connection, 2 grinders, Basic Steam, with milk foamer, hot water output, side lighting, Plug+Clean, Steam Jet, Jet option, 2,75 – 3,5 kW / 220 – 240 V	<b>03.1900.xxxx</b> Basic Milk, fixed water connection, 2 grinders, choc or topping hopper, Basic Steam, with milk foamer, hot water output, side lighting, Steam Jet, Jet option, 2,75 – 3,5 kW / 220 – 240 V	<b>03.1900.xxxx</b> Easy Milk, fixed water connection, 2 grinders, Basic Steam, with milk foamer, hot water output, side lighting, Steam Jet, Jet option, 2,75 – 3,5 kW / 220 – 240 V	<b>03.1900.xxxx</b> Easy Milk, fixed water connection, 2 grinders, choc or topping hopper, Basic Steam, with milk foamer, hot water output, side lighting, Steam Jet, Jet option, 2,75 – 3,5 kW / 220 – 240 V
---	---	---	---	--	--

The WMF 1500 S is the evolution of one of the most successful coffee machines from the global market leader, WMF: The WMF presto!/1400. The perfect price-performance ratio, the slender design and excellent quality have impressed thousands of satisfied customers. The WMF 1500 S includes all of the great qualities of its predecessor and has also been significantly improved in many areas.

At first glance, the cutting-edge design and the intuitive touchscreen are impressive. And the new optional Easy Milk system for hot and cold milk and hot milk foam opens up new opportunities. The many small and large improvements turn your day-to-day work into something that you can really enjoy. Some of the advantages only become apparent after many years: The rock-solid workmanship and high-quality components ensure that your guests can be spoiled with a consistently perfect coffee quality – day after day, for a very long time.

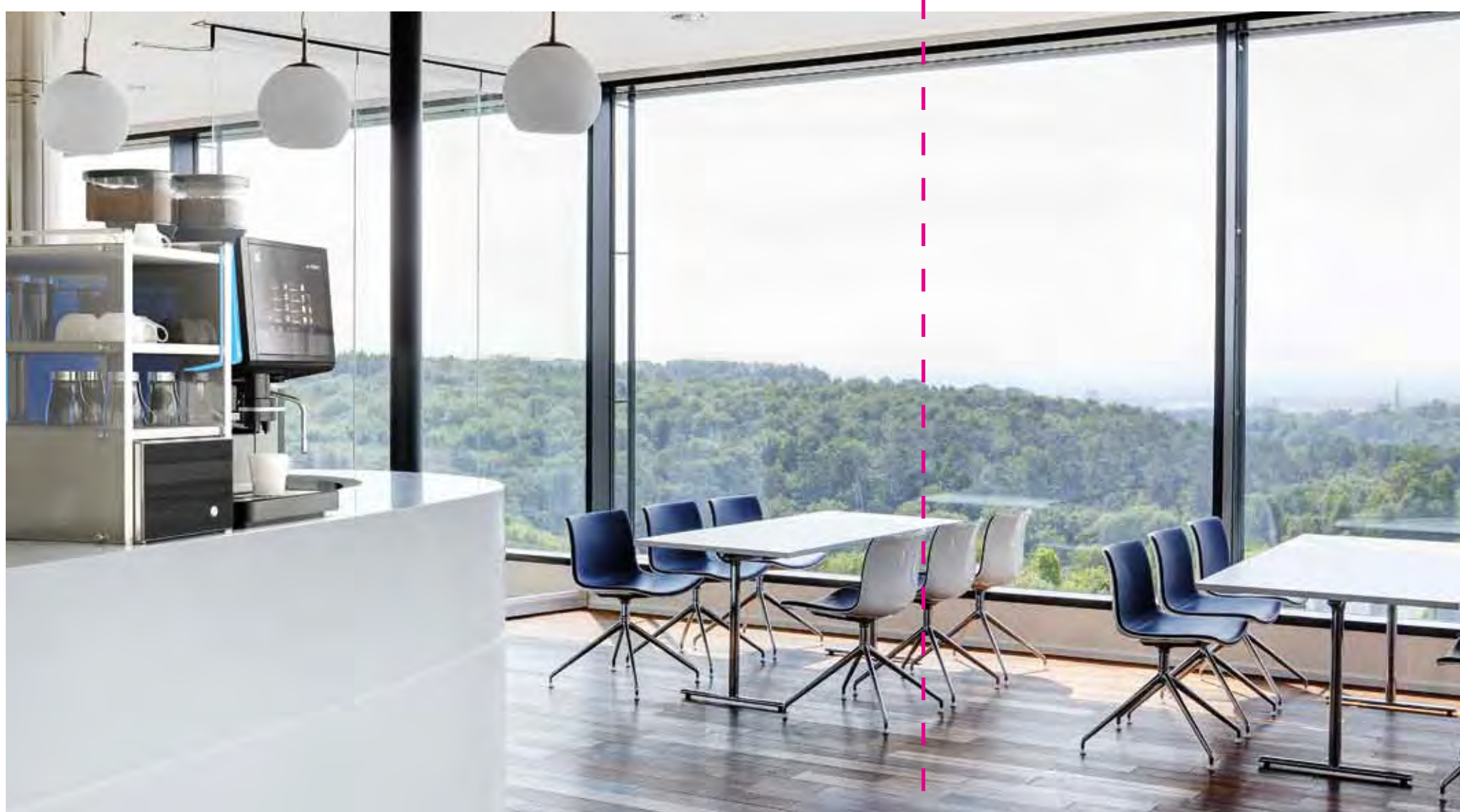
### THE WMF 1500 S – PERFECT AS AN ATTRACTIVE "UNIQUE SELLING POINT"



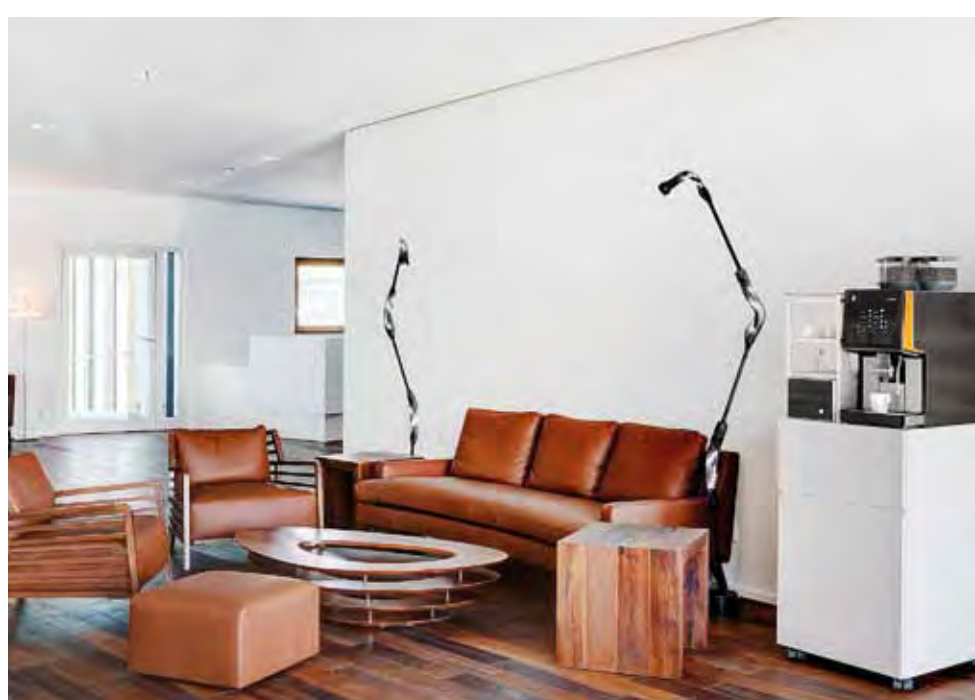
### FOR DIFFICULT MEETINGS TOO – SIMPLY GREAT SPECIALITY COFFEES



### THE WMF 1500 S – WITH THE NEW INTUITIVE TOUCHSCREEN, YOU ALWAYS KNOW WHAT'S GOING ON



### IDEAL FOR A QUIET AND RELAXED ATMOSPHERE



### AS A PERFECT NICHE PRODUCT – FOR A GREAT MORNING



### THE BAKERY AS AN EXPERT IN SPECIALITY COFFEES



### GREAT COFFEE GUARANTEED – EVEN AT THE PETROL STATION







# FEATURES

WMF 1500 S – YOUR NEXT STEP



**It's all about timing: The WMF 1500 S as a "time machine"**  
The new timer function means that you can choose suitable times at which you want to switch the WMF 1500 S on and off, and you can even activate and deactivate individual functions and drinks. This means that you can, for example, set the machine so that fresh milk is used for any drinks made before 6 p.m., but any drinks made after this time are made with topping powder, which makes the machine much easier to clean. Or you can have the machine switch to self-service at a specific time – the possibilities are endless.



**The WMF 1500 S sends clear signals**  
The visually attractive illuminated side components on the perfectly shaped WMF 1500 S also serve as a visual indicator of the operating states. For example, if a coffee bean hopper is empty, this is indicated by a flashing light.



**Soft sounds for perfect coffee**  
The days of noisy coffee machines preventing anybody in the vicinity from holding a conversation are now gone. Through targeted measures, the noise emissions on the WMF 1500 S have been noticeably reduced. You need to be able to smell and taste great coffee – not hear it.



**Whether small, medium or large – we can fill any mug**  
For example: Do you work in the "coffee-to-go" sector and use different sized coffee mugs? The practical Small-Medium-Large (SML) function will help you to easily assign predefined fill-up quantities to each required drink.



**Perfectly warmed hot water**  
It goes without saying that the WMF 1500 S also produces hot water for tea, for example, at the touch of a button.



**Easy to switch to self-service**  
With the WMF 1500 S, you get two machines for the price of one. Simply replace a double cup dispenser with a single cup dispenser and set the machine to self-service in the display – your WMF 1500 S becomes the perfect self-service machine.



**Automatic Cleaning**  
Automatic cleaning at the touch of a button. That saves time and reduces operating costs.



**Increased variety thanks to the manual insert option**  
On machines with one or two product hoppers, you can use another type of ground coffee.



**Take a load off**  
All three of the product hoppers can be removed. The coffee bean hoppers are even suitable for cleaning in the dishwasher, which is practical and makes cleaning the machine a lot easier.



**That's about the height of it!**  
The height-adjustable dispenser on the WMF 1500 S is extremely easy to adjust with just one hand. Receptacles up to 175 mm height can be filled, meaning that you can make a whole pot of coffee for breakfast or in an office.



**No limits on the disposal of coffee grounds**  
A grounds hopper can never be big enough. This is why we have given the grounds hopper on the WMF 1500 S truly generous dimensions. But for anybody who feels that this spacious hopper is still not big enough, they can choose the optional grounds disposal through the counter top.



**Maintenance has never been so easy**  
You can carry out basic maintenance work, such as changing a seal on the easy-to-remove brewer, yourself. Your machine will be a rare sight for the WMF service technicians.



**The WMF 1500 S – colours to match your mood**  
The lighting of the side components on the WMF 1500 S is controlled intuitively using a colour scale. Infinite nuances set just the right tone for any ambience or mood.



**The WMF 1500 S can be on the left or right**  
The milk feed on the new WMF 1500 S is variable. This means that it is now also possible to work with two machines and just one wide Cup&Cool (a combination of cup rack and milk cooler) in between these machines. – This saves a lot of counter top space, which is usually scarce enough to begin with.



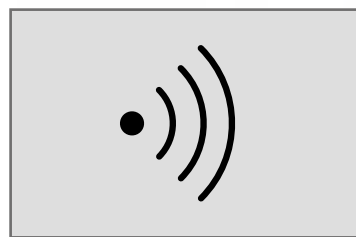
**Reaching new heights**  
The 10-cm-high "feet" – which are sold separately – easily provide even more "leg room" for your WMF 1500 S. And this creates space for cleaning the counter top under the machine.



**Delicious hot chocolate with milk and "chocciato"**  
With lots of fresh milk at your fingertips, you can create almost any chocolate or coffee drink.



**Better quality is at your fingertips**  
The perfect coffee taste is based on levels of quality that have been clearly defined as a result of a long series of tests for each individual drink. You can also set the quantity of ground coffee, the volume of water and the water temperature.



**Remote access to your data**  
Using Remote Data Access, you can call up important information from anywhere and at any time, as you require. If you have several machines, this provides you with more transparency and helps to provide you with an overview of everything.



**8 drinks buttons on 6 levels**  
An amazing 48 drinks can be programmed for single or double cups. You can also store your own recipes and images. In self-service mode, it is even possible to combine groups of drinks at different levels, depending on the time of the day.



**Why another instruction manual?**  
The touch display uses text and images to inform the user about the current operation and about tasks that are to be carried out – for example, it informs the user that the grounds hopper needs to be emptied.



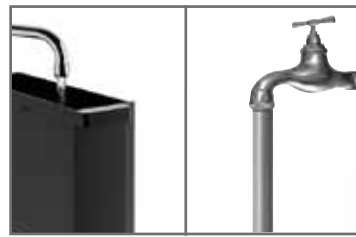
**Advertising that is happily received**  
While selecting their drink, the owner can take advantage of the user's increased attention in the self-service area by displaying successful advertisements.



**Bacteria don't stand a chance**  
The patented Plug+Clean milk cleaning system effortlessly cleans all of the parts through which milk flows, while still fully complying with the HACCP. Certified by the Technical University of Munich.



**Permanent decalcification**  
A WMF water filter extends maintenance intervals, improves taste and extends the service life of the machine.



**Flexible water supply**  
Depending on your requirements and the given circumstances, a WMF 1500 S can be equipped with a water tank or with a fixed water connection.



**Service**  
A worldwide service network unique in the industry covering more than 70 countries ensures that you can always rely on your WMF coffee machine.



**ISO certifications**  
The WMF business division for coffee machines is certified in accordance with DIN 9001/quality management and DIN 14001/environmental management.



**Environmentally friendly thanks to "Green WMF"**  
Reduced energy consumption, reduced use of chemicals, and almost 100% recycling – these are just a few of the points in the sustainable WMF concept.



Full-size image of the machine