



# X64SD

## SINGLE DOSE HOME GRINDER



**Engineered to  
Impress**

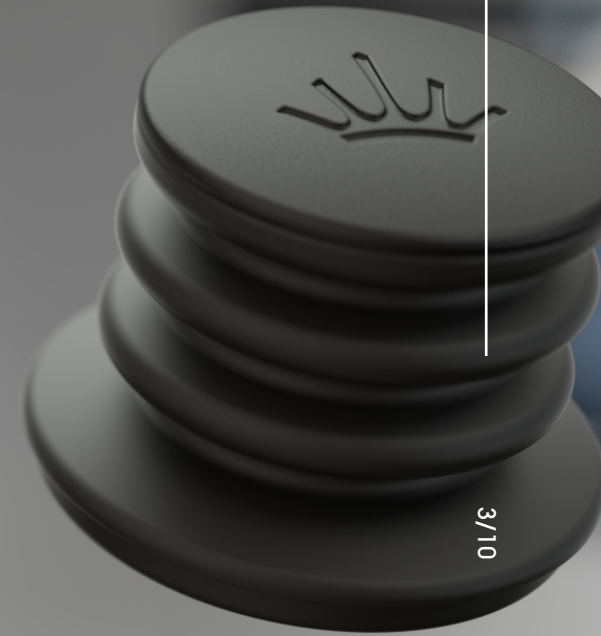
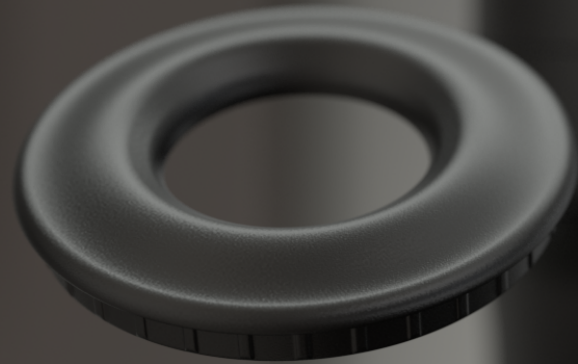
Designed for  
Home



# One Grinder, Endless Possibilities



2/10



3/10



# Ultimate Versatility in a Single Grinder

Experience the freedom of single dose grinding at home! Effortlessly switch between coffee recipes and grind sizes — from fine to coarse and back again — with ease, always producing the freshest coffee. Every cup is a new opportunity to explore different flavors with allround flexibility. Grind a decaf espresso with a fine setting, then switch your coffee beans and dial in a medium grind for a pour-over just a minute later. With zero retention and repeatable grind settings, your coffee doses are consistent and fresh, delivering reliable results with every brew method.

Designed with the home user in mind, the X64 SD Single Dose Home Grinder's small footprint fits into any size kitchen or coffee corner and is your go-to for early mornings with its whisper-quiet grinding. Precision-engineered for repeatability and versatility, it's the perfect combination of convenience and exceptional coffee quality.



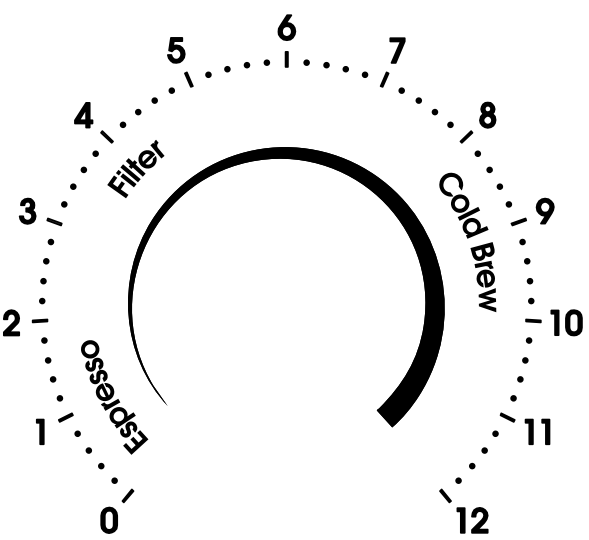
# Achieve the Perfect Grind Every Time

The intuitive dial knob enables effortless, micron-level customization on a detailed scale from 0 to 12, allowing fine and stepless adjustments.



# From Espresso to Cold Brew

With a built-in grind guide inside the lid, you can easily identify the ideal grind size range for your chosen brewing method — whether you're aiming for espresso, filter, up to cold brew. Multiple hopper toppings and accessories are also included to accommodate different volumes of coffee doses and to provide smooth grinding operations.







**Single Dose**  
Home Grinder

From espresso to cold brew,  
ultimate versatility



**64 mm**  
Steel Burrs

Even particles for an incredible  
taste experience



**Zero**  
Retention

No coffee grounds left behind,  
fresh dose every time



**Reduced**  
Noise

Whisper-quiet grinding,  
perfect for early mornings



**Fastest**  
Grind

With a minimum output of  
3 g/s for espresso



**Bellow**  
Included

For those who value  
convenience & cleanliness



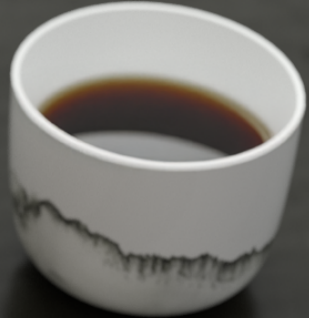
**Smallest**  
Footprint

So compact, you can literally  
take it anywhere



**Precise**  
Results

Stepless grind size adjustment  
on micron level





Technical Details

|  |   |
|--|---|
| Voltage / Frequencies / Phases / Nominal power | 220-240 V / 50/60 Hz / 1~ / 300 W<br>120 V / 60 Hz / 1~ / 300 W<br>100 V / 50/60 Hz / 1~ / 300 W  |
| Idle speed                                     | 1950 rpm  |
| Burr diameter                                  | 64 mm   |
| Burr material                                  | Special steel   |
| Average grinding capacity*                     | approx. 2,5-6 g/s (fine - coarse)   |
| Bean hopper capacity                           | Standard/Anti-Popcorning: 34 g<br>Hopper Extension: 105 g<br>Bellow: 82 g   |
| Dimensions (w x h x d)                         | 14,3 x 24.9 x 25,3 cm   |
| Dimensions of packing (w x h x d)              | 41 x 31 x 18,5 cm   |
| Net weight                                     | 4,8 kg  |
| Gross weight                                   | 7 kg  |
| Certifications                                 | CB, CE, KC, PSE, UKCA, SAA, RCM, ETL, ROHS, CCC, NSF  |
| Standard colors                                | Matte black<br>Matte white  |
| Accessories (included)                         | Stainless steel dosing cup with funnel<br><br>Easily swappable grinder toppings:<br>- Hopper Extension (for more capacity)<br>- Bellow (for easiest purging)<br>- Anti-Popcorning (for smooth operations) |



\*Depends on the grinding goods and the chosen degree of fineness. All measured values under laboratory conditions. Other electric specifications available on request. Subject to change without prior notice.





[www.mahlkoenig.com](http://www.mahlkoenig.com)